



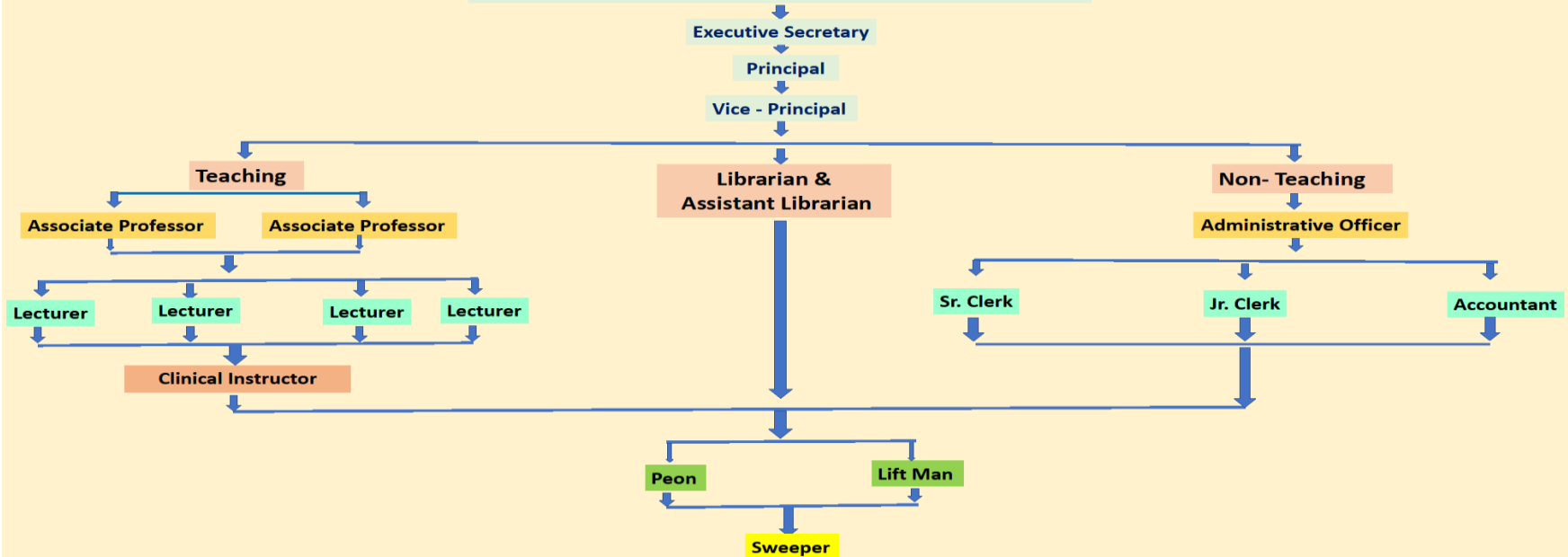
SEVA MANDAL EDUCATION SOCIETY'S SMT. SUNANDA PRAVIN GAMBHIRCHAND COLLEGE OF NURSING



SEVA MANDAL EDUCATION SOCIETY'S
SMT. SUNANDA PRAVIN GAMBHIRCHAND INSTITUTE OF NURSING & PARAMEDICAL SCIENCES
SMT. SUNANDA PRAVIN GAMBHIRCHAND COLLEGE OF NURSING, GNM SCHOOL OF NURSING (Proposed) & ANM SCHOOL OF NURSING
Affiliated to: Maharashtra University of Health Sciences, Nashik. Maharashtra State Board of Nursing and Paramedical Education
Recognised by: Indian Nursing Council, Maharashtra Nursing Council
MUHS IMPACT ASSESSMENT A+ GRADE (2018-2019)

ORGANIZATION CHART

Management Council Members of Seva Mandal Education Society



Sunanda Pravin Gambhirchand
Principal
Smt. Sunanda Pravin Gambhirchand
College of Nursing
338, R. A. Kidwai Road,
Matunga, Mumbai - 400 019.